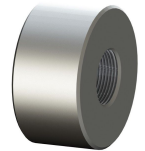




RHINO Mechanical Anchor - RHINO mechanical anchors are used to terminate reinforcing steel as an alternative to conventional hooked bars. The oversized anchor attaches to one or both ends of the reinforcing steel creating a headed bar. By utilizing the proprietary RHINO Taper Threads, which allows for quick alignment and engagement of the rebar, the system is capable of exceeding the ACI, UBC, IBC and ASTM A970 requirements for headed deformed bars. The development lengths and anchorage capacity are determined by the structural engineer in compliance with ACI 318.



Features and Benefits

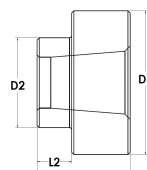
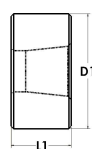
- The net bearing area of the head, A_{brg} , meets or exceeds the 4x the nominal rebar area as required by ACI 318, ASTM A970 and ICC ES AC308.
- Replaces hooked bar and reduces rebar congestion
- Exceeds ACI, UBC, A970, IBC, AS3600 building codes
- Fast and simplified installation of rebar
- Designed for 12mm (#4) through 43mm (#14)
- Available in Stainless Steel 2205 and epoxy coated A775



Typical Applications

- **End termination of rebar**
- **Beam or Roof to Column**
- **Closure Pours**
- **Shear Reinforcing**

Part Number	US Rebar Size	Metric Rebar Size	Canada Rebar Size	L1 (in)	L1 (mm)	D1 (in)	D1 (mm)	L2 (in)	L2 (mm)	D2 (in)	D2 (mm)	Weight (lbs)	Weight (kg)
MA13, SSMA13	#4	12mm	10M	.95	24	1.25	35					.2	.09
MA16, SSMA16	#5	16mm	15M	1.10	28	1.50	38					.4	.18
MA19, SSMA19	#6	20mm	20M	1.28	33	1.75	48					.8	.36
MA22, SSMA22	#7	22mm	-	1.44	37	2.00	51					1.0	.45
MA25, SSMA25	#8	25mm	25M	1.61	41	2.25	57					1.3	.59
MA28	#9	28mm	30M	1.77	45	2.75	70					2.2	1.00
MA32	#10	32mm	-	1.97	50	3.00	76					2.7	1.22
MA36	#11	36mm	35M	2.21	56	3.25	83					3.4	1.54
MA43	#14	43mm	45M	2.64	67	4.00	102	.98	25	2.50	64	4.9	2.22



DIMENSIONS ARE FOR REFERENCE ONLY.

DIMENSIONS ARE FOR REFERENCE ONLY.

inoCC